



CMDBuild[®] **DAY 2018**

welcome

WE WILL INSTANTLY CLICK

20 NOVEMBER 2018



TECNOTECA

Web solutions open source

UMBERTO CALLIGARO

Front-end engineer - TECNOTECA srl

CMDBuild 3 client side



The framework choice



Sencha Ext JS

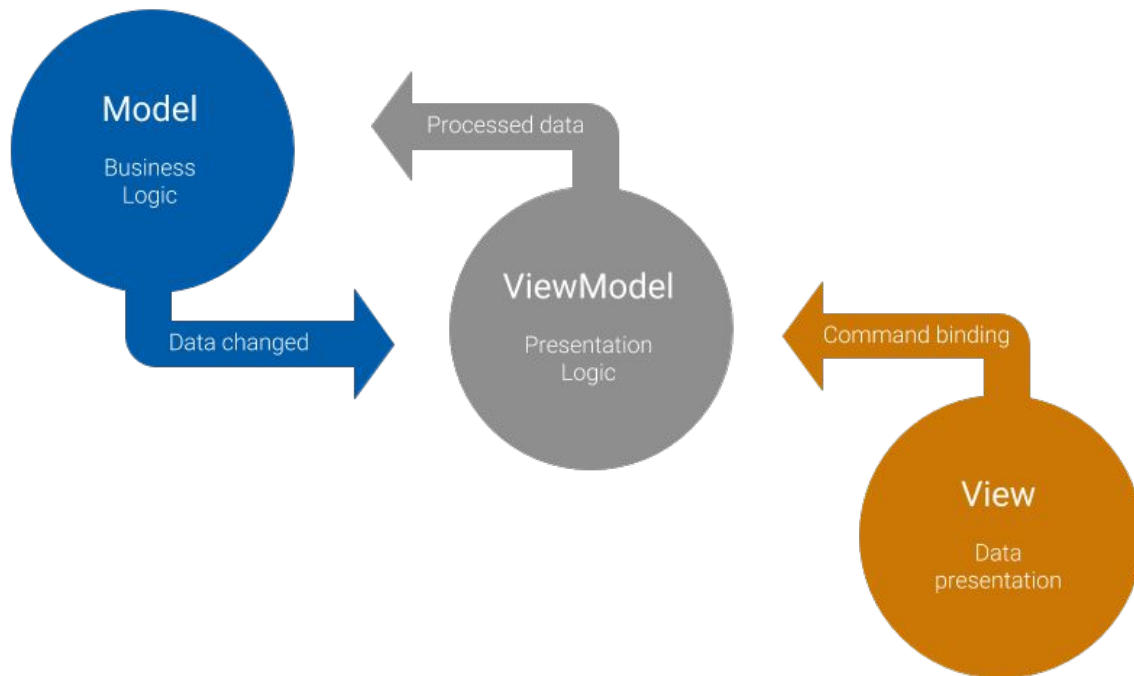
VS



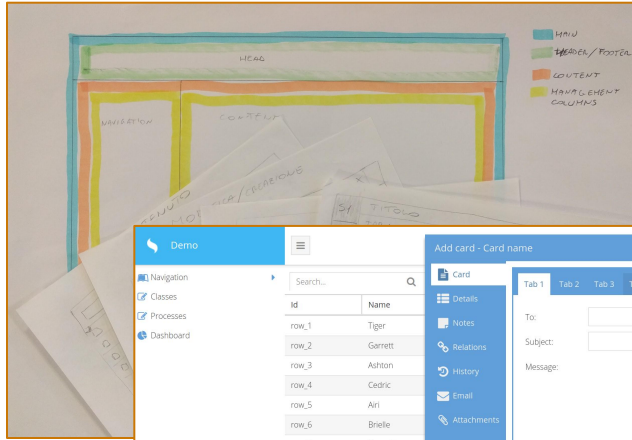
Angular JS

Sencha ExtJS & MVVM pattern

4



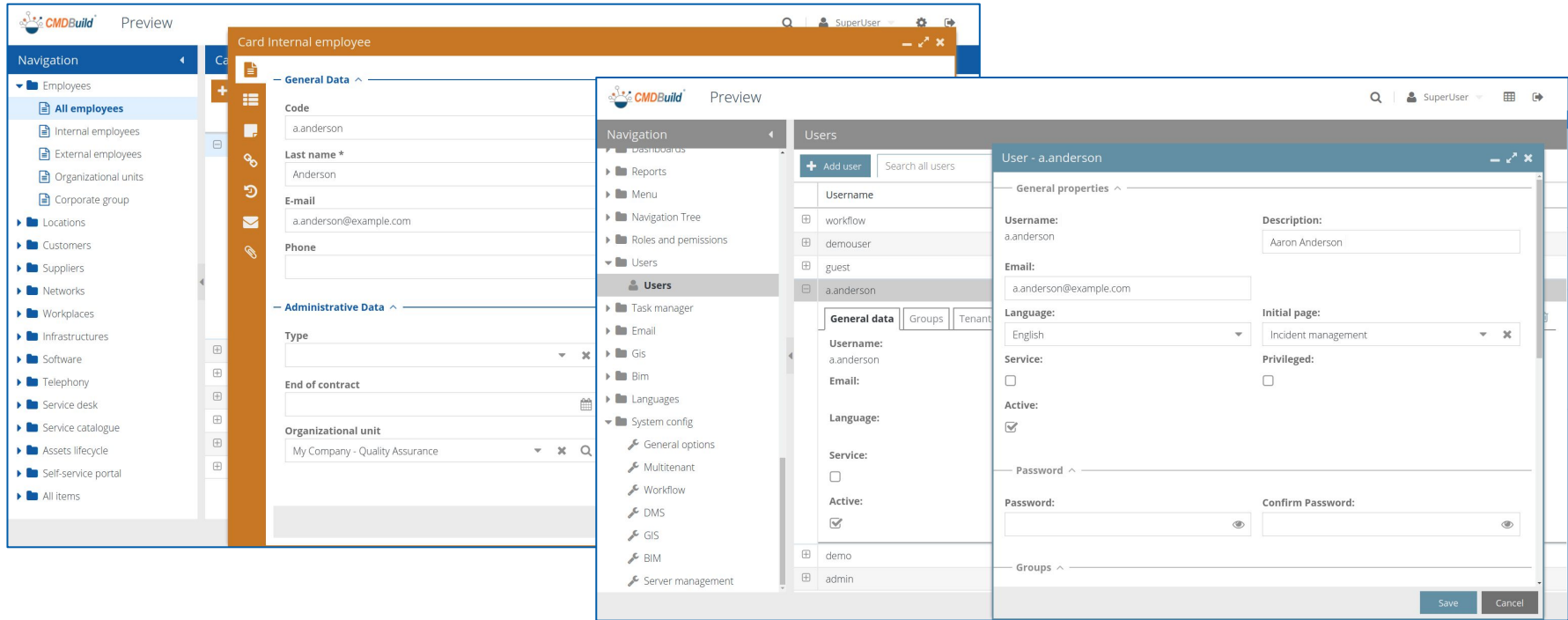
CMDBuild 3 prototypes



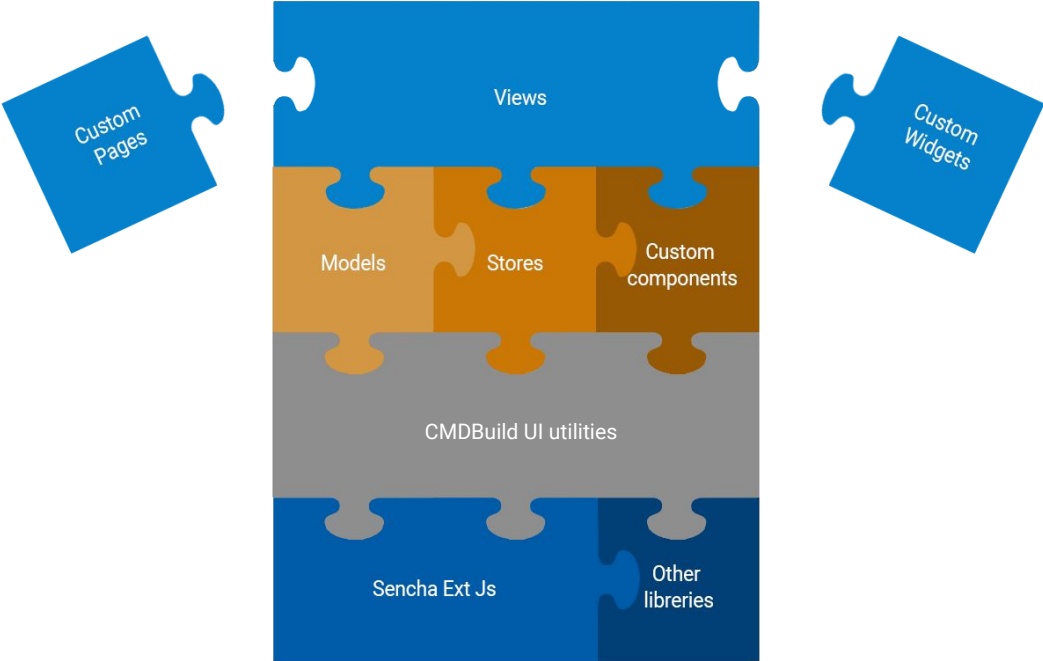
A screenshot of the CMDBuild 3.0 prototype interface in a demo view. The interface features a blue navigation sidebar on the left with options like "Classes", "Processes", and "Dashboard". The main area displays a table with columns "Id" and "Name", listing 15 rows of data. A "Details" panel on the right shows a form for adding a card, with fields for "To:", "Subject:", and "Message:". The bottom of the screen shows a footer with the text "© Copyright 2001-2017 Overyy S.r.l. - All Rights Reserved".

A screenshot of the CMDBuild 3.0 prototype interface in a "Cards Desktop" view. The interface features a blue navigation sidebar on the left with options like "Employees", "Locations", "Customers", "Suppliers", "Networks", and "Workplaces". The main area displays a table with columns "Code", "Description", "Assignee", "Hostname", "Serial number", "Environment", "Supplier", and "Warranty end...". The table lists several rows of data, including "729232-10" and "486325-57". A "Details" panel on the right shows a form for adding a card, with fields for "To:", "Subject:", and "Message:". The bottom of the screen shows a footer with the text "© CMDBuild 3.0-dev".

UI Development



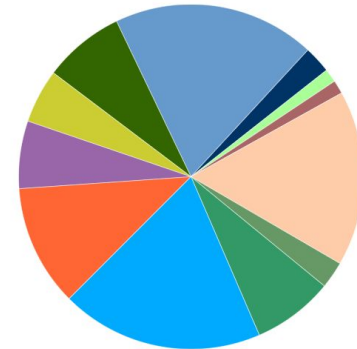
CMDBuild UI Architecture



User Interface tests

The screenshot shows a web browser window displaying a management interface. The browser's developer tools are open, showing the console with test results and the network tab with a list of API requests. The interface includes a sidebar menu with items like 'Admin', 'Users', 'Groups', 'Roles', 'Permissions', 'Settings', 'Reports', 'Logs', 'Help', and 'Logout'. The main content area displays a list of items with columns for 'ID', 'Name', 'Status', and 'Actions'. The console shows test results for various UI elements, and the network tab shows a list of API requests with their status and response data.

CMDBuild UI Tests



- Login
- UI Basics
- Navigation menu
- Grids
- Cards List
- Card CRUD
- Card history
- Card Master/Details
- Card Relations
- Workflow base
- Administration base
- Administration classes

UMBERTO CALLIGARO

u.calligaro@tecnoteca.com

Thank you!

